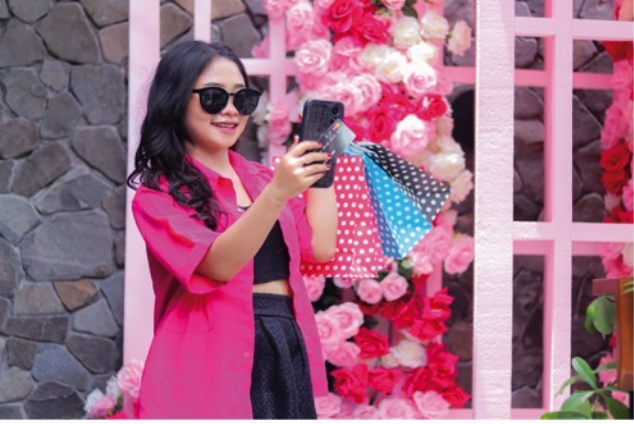




SPRINGFIELDS



DESIGNER OUTLET & LEISURE



Springfields is unique,  
combining  
designer retail, gardens  
and leisure



## TOP 5

AVERAGE WEEKLY SALES

£58,599



AVERAGE ANNUAL DENSITY PSF

£755

## TOP 10

AVERAGE WEEKLY SALES

£40,303



AVERAGE ANNUAL DENSITY PSF

£664

## TOP 20

AVERAGE WEEKLY SALES

£27,508



AVERAGE ANNUAL DENSITY PSF

£576

MOLTON  
BROWN  
LONDON

Dune  
LONDON

RADLEY

Levi's

SKECHERS

JOULES  
- EST. 1969 -

NEXT  
OUTLET

M&S  
OUTLET

LOUNGERS



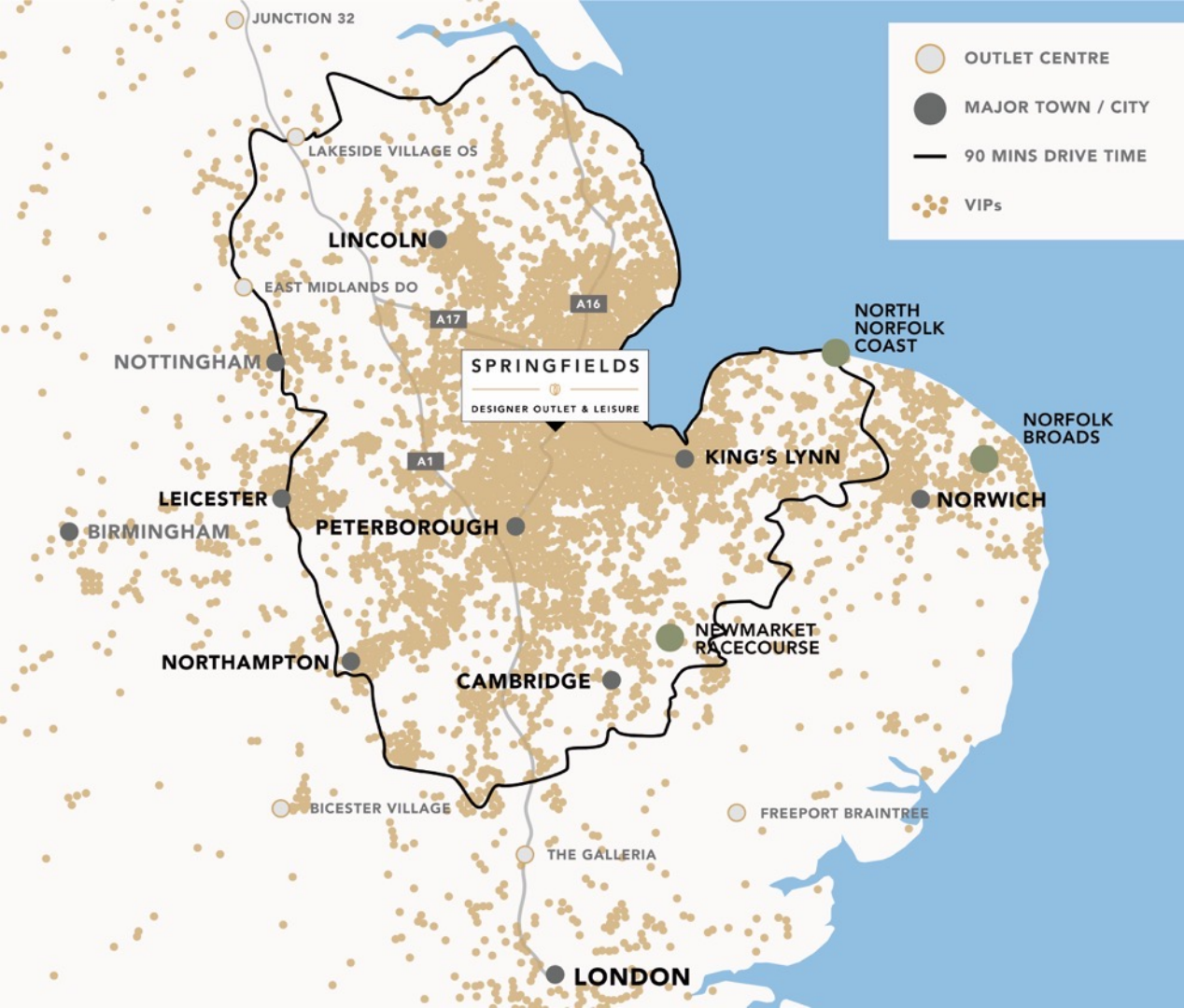
CREW CLOTHING COMPANY

FATFACE  
OUTLET

OSPREY  
LONDON

Clarks  
of England

# Sales Performance 2024/25



# Springfields dominates its catchment

6.3M population worth £26.48Bn

2.4M footfall

97,000 VIPs

51M tourist visits add £2.38Bn



SPRINGFIELDS



DESIGNER OUTLET & LEISURE

**Dune**  
LONDON

JOULES  
EST. 1989

MOLTON  
BROWN  
LONDON

OSPREY  
LONDON

RADLEY



JACK  
WILLS

Ben Sherman



NEXT  
OUTLET

WHITE STUFF

THE COSMETICS  
COMPANY STORE



M&S  
OUTLET



FATFACE  
OUTLET



QUBA & CO.  
BRITISH NAUTICAL HERITAGE



**SKECHERS**

ESTÉE LAUDER



SKOPES  
EST. 1948

The Fragrance Shop

ProCook



beauty  
outlet



claire's



CHAPELLE  
JEWELLERY & WATCHES



PETALO LOUNGE  
CAFÉ BAR

CAFFÈ  
NERO

COSTA  
COFFEE



REGATTA  
GREAT OUTDOORS





Unit 59: 1178 sq ft

**THE CRAFT OUTLET**

Unit 1: 4000 sq ft

**THE PARLOUR RESTAURANT**

Unit 2: 3029 sq ft

**SPORTS DIRECT & GAME**

Unit 28/29: 4198 sq ft

**SKECHERS**

Unit 30: 2435 sq ft

**MOUNTAIN WAREHOUSE**

Unit 31-34/44/45: 13627 sq ft

**EVENTS & CONFERENCE CENTRE**

**FASHION**

3229 sq ft

**OUTDOOR LIVING**

2704 sq ft

**ACCESSORIES**

2973 sq ft

**BOOKS**

1615 sq ft

**HOME FRAGRANCE**

2565 sq ft

**SEASONAL**

1630 sq ft

**TOYS & GAMES**

2153 sq ft

**CARDS**

1657 sq ft

**FOOD**

635 sq ft

**COOKWARE & KITCHEN**

2308 sq ft

**INDOOR PLANTS**

1674 sq ft

Unit 13: 1000 sq ft

**GIFT COMPANY**

Unit 12: 1300 sq ft

**EE**

Unit 11: 1335 sq ft

**SALTROCK**

Unit 10: 1314 sq ft

**GRAPE TREE**

Unit 9: 1118 sq ft

**CUA & CO**

Unit 8: 1118 sq ft

**CHAPPEL**

**PAVERS SHOES**

Unit 5: 1531 sq ft

**BEN SHERMAN**

Unit 6/7: 3441 sq ft

**FATFACE**

OUTLET

**EAST AVENUE**

**M&S**

OUTLET

**NEXT**

OUTLET

Unit 46-48: 6537 sq ft

Unit 49a: 2629 sq ft

Unit 49b: 1898 sq ft

Unit 49c: 1712 sq ft

**SKOPES**

**RAGING BULL**

**Levi's**



**HOME & GARDEN**

**BLUE DIAMOND/GARDEN CENTRE**

36230 sq ft

**OUTDOORS**

**INDOORS**

**RESTAURANT**

6458 sq ft

**NORTH AVENUE**

**DUTCH MARKET SQUARE**

**SOUTH AVENUE**

Unit 16: 1447 sq ft

**KLASS**

Unit 15: 1527 sq ft

**WEIRD FISH**

Unit 16: 1014 sq ft

**DENBY**

Unit 17: 1805 sq ft

**PROCOOK**

Unit 18: 1408 sq ft

**JULIAN CHARLES**

Unit 19: 1574 sq ft

**HOME**

Unit 20: 815 sq ft

**COSTA COFFEE**

Unit 21: 1026 sq ft

**CLAIRE'S**

Unit 22: 2165 sq ft

**DESIGNER WAREHOUSE**

Unit 23b: 1933 sq ft

**ROMAN**

Unit 23a: 2475 sq ft

**JOULES**

Unit 24: 1542 sq ft

**HALLMARK OUTLET**

Unit 25a: 1098 sq ft

**MOLTON BROWN**

Unit 25: 1446 sq ft

**CAFFÈ NERO**

**LOUNGERS**

Unit 60: 4140 sq ft



Unit 35a: 1981 sq ft

**THE SWEET EMPORIUM**

Unit 35b: 1665 sq ft

**Calety**

Unit 35c: 1241 sq ft

Service Consider

Unit 30: 1561 sq ft

**JACOBS**

Unit 51: 1288 sq ft

**LUKE 1977**

Unit 52: 686 sq ft

**THE FRAGRANCE SHOP**

Unit 53a/b: 2058 sq ft

**BEAUTY OUTLET**

Unit 53c: 1592 sq ft

**EDEN MENSWEAR**

Unit 53d: 1271 sq ft

**RADLEY**

**CLARKS OUTLET**

Unit 39: 1849 sq ft

**THE COSMETICS COMPANY STORE**

Unit 40a: 800 sq ft

**OSPREY LONDON**

**Dune LONDON**

Unit 41b: 2800 sq ft

**SUBWAY**

Unit 41a: 1228 sq ft

**THE WORKS**

Unit 42a/42b: 3792 sq ft

**LEGO**

**STARLINGS TOY OUTLET & LEGO**

Unit 43: 5135 sq ft

**THE KITCHEN RESTAURANT, BAR & CAFÉ**



**CAMELGATE**



## Performance

2026 turnover +6% vs. 2025

21 years consecutive turnover growth, bar-Covid

Top 5 retailers' annual density £755 psf

Full year scheme annualised density £550 psf

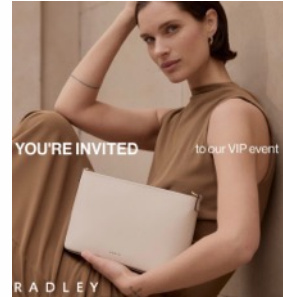
# SPRINGFIELDS NEWS



## Events

All year-round events programme

Winter Wonderland Walk attracts 30,000 paying guests and drives overall turnover for 8-week event +10%



## Marketing

Reaching over 1.5M impressions every month

Very active social media

Fast response individual retail campaigns



## New Stores

Springfields is fully let

Recent new store Openings: Molton Brown, Ben Sherman, Luke 1977, Quba & Co, Loungers/Petalo Lounge



We've benefitted greatly from the excellent Springfields team, especially recruitment and marketing. Sales have far exceeded all expectations.

Cyril Perraud, Senior Property Manager



Springfields are fantastic to work with and we are delighted to say the Petalo Lounge has significantly outperformed our expectations.

Jon Birtles, Senior Acquisitions and Property Manager



RHS has appointed Springfields as an official Partner Garden



Exceptional Blue Diamond 60,000 SqFt home and garden department store



Our unique RHS designer gardens are free to enter and attract high-value guests, who spend more with longer dwell times



## Adventure Land

10 high-quality family attractions including UK's largest JCB Young Drivers Zone and Tree Top Village





The region's destination for F&B



# Extensive event programme

30 annual events  
Over 200,000 guests





Digitally focused marketing, app, influencers, guest engagement, retailer interaction



## A sustainable retail destination

ESG is in Springfields DNA. BREEM 'Excellent'. Over 650 trees. 250,000 bulbs planted annually.  
Eco-friendly and energy-saving initiatives

## EXECUTIVE TEAM



Simon Stone  
CENTRE DIRECTOR



Ian Sanderson  
SPRINGFIELDS CEO  
SLR Asset Managers  
+44 7774 135218  
ian.sanderson@slROUTLETS.CO.UK



Marion Durose  
CEO SPRINGFIELDS  
HORTICULTURAL SOCIETY

owned by



## SPACE RETAIL PROPERTY CONSULTANTS



Peter Leverett MRICS  
LEASING DIRECTOR  
+44 7860 967430  
peter.leverett@space-rpc.com



Patrick Hanson-Lowe  
MARKETING DIRECTOR



Ben Taylor MRICS  
LEASING DIRECTOR  
+44 7870 682050  
ben.taylor@space-rpc.com



Ken Gunn  
ANALYST